

14 Count Aida Doily Assortment



Aida is perfect for all your stitching projects.

Recipe

Aida Doilies

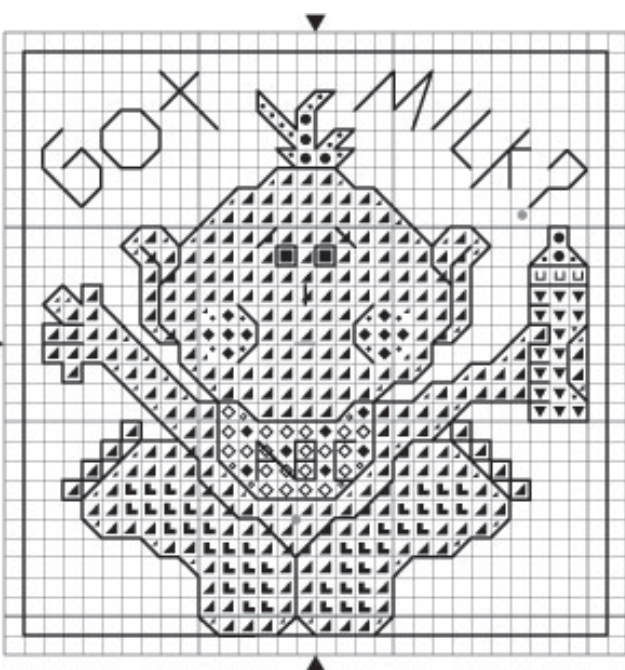
14 ct Aida doilies have pre-finished crochet edges.

Any small cross-stitch patterns using 14 ct Aida are suitable for these doilies.

Other suggested uses:

- 4" - tiny doll collars
coasters
sachets
scrapbooking
gift tags
ornaments
- 6" -small baby bibs
doll collars
scrapbooking
door hangers
- 8" -baby bibs
scrapbooking
picture mats

Recipe



Color Guide

DMC	COLOR
BLANC	White
211	Light Lavender
307	Lemon
310	Black
775	Very Light Baby Blue
818	Baby Pink
951	Flesh
3770	Light Flesh

Back Stitches:

307	Lemon (use to sew the button to the mouth for a binky)
310	Black



French Knots:

310	Black
-----	-------

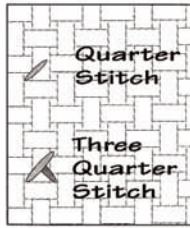
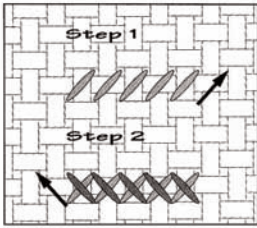


14 Count Aida Doily Assortment

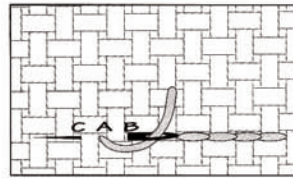
Stitches

Cross Stitch Diagrams

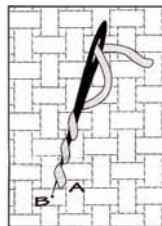
Step 1 & 2



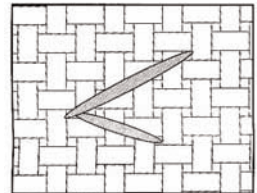
Back-Stitch



French Knot



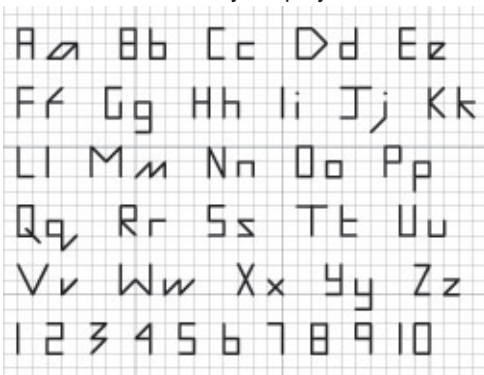
Straight-Stitch



Stitching Guidelines

- Aida doilies are handmade and slight variations will occur. Complete the outside back-stitch frame first then center the design in the frame.
- Use 18" lengths of floss for easier handling.
- Use two strands of floss for cross-stitches and one strand of floss for back and straight-stitches.
- Work one color section at a time. To begin, hold 1" of floss on the back side of the fabric. Secure the end in place by crossing over the floss with the first few stitches.
- Work the stitches by pulling the needle up through the fabric from the wrong side. Push the needle back down through the fabric from the right side. Refer to the stitching diagrams for individual stitches used.
- Be sure all stitches cross in the same direction as shown in the stitching diagrams. Do not cross on the back of the fabric for long distances.
- Do not pull the stitches too tightly. Keep the tension light and even. The stitches should be loose enough to have a textured effect.
- If the floss becomes twisted, drop the needle and let the floss unwind itself.
- To end, run the needle under a few stitches on the wrong side of the fabric. Cut away the excess floss close to the fabric.

You may use this alphabet grid for names and dates on your projects



Order Wimpole Street Creations "A Taste of the Season" CD for machine embroidery cross-stitch designs. Designs are digitized in the following formats: Tajima (.DST), Melco (.EXP), Pfaff (.PCS), Viking (.HUS) and Brother (.PES).

To order call Barrett House at 800.432-5776 or www.barrett-house.com



For more recipes see www.barrett-house.com